



Site 65 The Mews Mount Pleasant Road, Jordanstown,  
Newtownabbey, BT27 0NQ

- Family Sized New Build Detached (c.1,850 sq ft)
- Lounge; Separate Family Room
- Utility Room; Furnished Cloakroom
- Private Driveway
- Well Sought After Location & Development
- Four Bedrooms; Principal En Suite
- Kitchen Through Dining Room
- Gas Heating; PVC Double Glazing
- Gardens Front, Side & Rear
- Turnkey Finish (bar tiling and floor coverings)

Offers Over £410,000

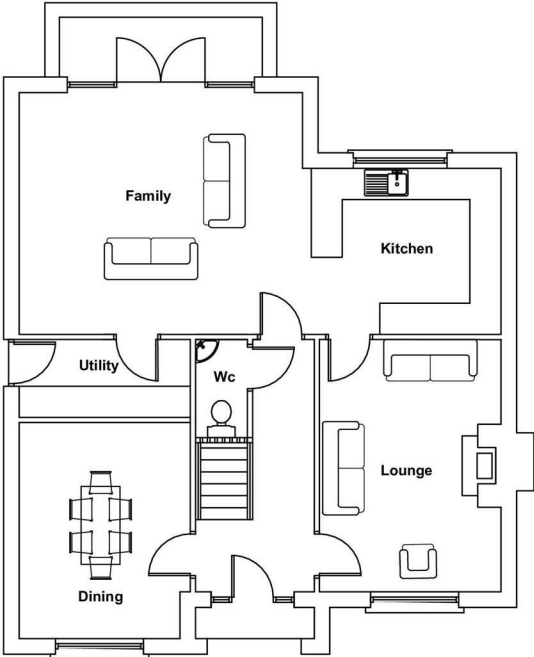
EPC Rating



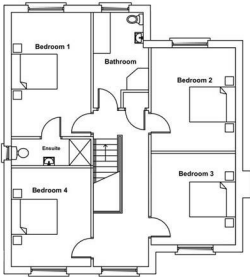
Front elevation



Rear elevation

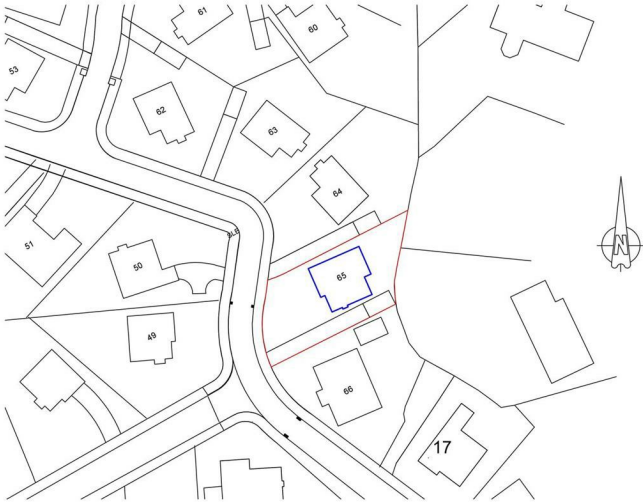


Ground floor plan



First floor plan

## PROPERTY DESCRIPTION



**COLIN  
GRAHAM  
RESIDENTIAL**  
**...WE SELL HOUSES**

**CGR FINANCIAL**  
**...WE DO MORTGAGES**



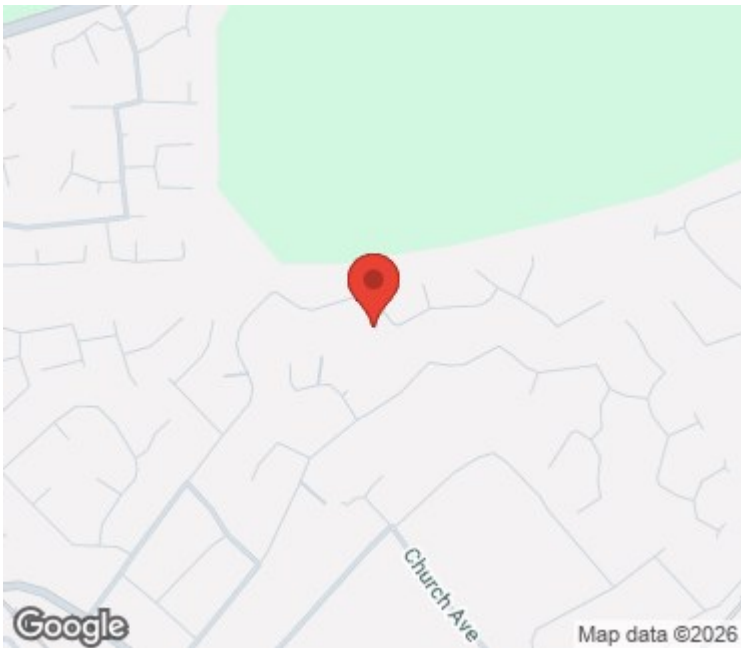
**Generous sized, four bedroom/two+ reception, new build, detached family home, extending to circa 1,850 sq ft, situated within the highly sought after 'The Mews' development, Jordanstown Road, Jordanstown, Newtownabbey.**

**The property comprises entrance hall, furnished cloakroom, lounge with wood burning stove, family room, kitchen through dining room, utility room, four well-proportioned first floor bedrooms, to include principal en suite, and separate family bathroom.**

**Externally, the property enjoys private driveway, and gardens front, side and rear.**

**Other attributes include gas heating, underfloor heating, PVC double glazing, and turnkey finish (bar floor coverings and tiling).**

**Early interest highly recommended to avoid disappointment.**



Energy Efficiency Rating		
	Current	Potential
Very energy efficient - lower running costs		
(92 plus) <b>A</b>		
(81-91) <b>B</b>		
(69-80) <b>C</b>		
(55-68) <b>D</b>		
(39-54) <b>E</b>		
(21-38) <b>F</b>		
(1-20) <b>G</b>		
Not energy efficient - higher running costs		
<b>Northern Ireland</b>	EU Directive 2002/91/EC	

Agents Note: Whilst every care has been taken to prepare these sales particulars, they are for guidance purposes only. All measurements are approximate and for general guidance purposes only and whilst every care has been taken to ensure their accuracy, they should not be relied upon and potential buyers are advised to recheck the measurements

**INVESTORS IN PEOPLE**  
We invest in people Gold

**PRS** Property Redress Scheme

Proudly sponsoring



Awards

